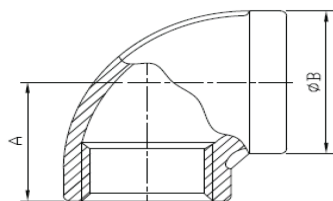




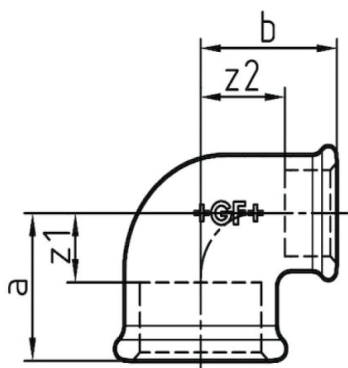
# PHỤ KIỆN REN (HIỆU FH)

## Elbow, 90



Size		Dimensions
Inch	mm	A
1/8	6	17.5
1/4	8	20
3/8	10	23.5
1/2	15	26.5
3/4	20	31
1	25	36.5
1 1/4	32	43.5
1 1/2	40	47.5
2	50	55.5
2 1/2	65	67
3	80	75.5
4	100	94
5	125	114

## Elbow, 90, reducing



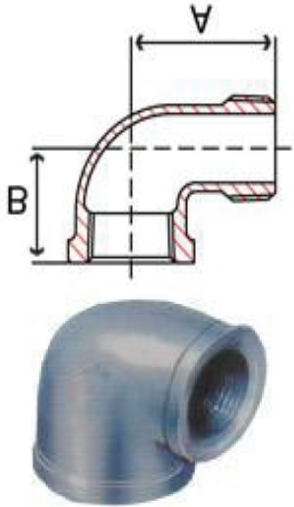
Size		Dimensions	
Inch	mm	A	B
1 1/2x1	40x25	40	44
1 1/2x1 1/4	40x32	44	47
2x1 1/2	50x15	37	47
2x3/4	50x20	40	48
2x1	50x25	43	50
2x1 1/4	50x32	47	53
2x1 1/2	50x40	51	54
2 1/2x1	65x25	46.5	58.5
2 1/2x1 1/4	65x32	50.5	60
2 1/2x1 1/2	65x40	53.5	61
2 1/2x2	65x50	59	64
3x1 1/4	80x32	53.5	68
3x1 1/2	80x40	56.5	71

Size		Dimensions	
Inch	mm	A	B
4x2	100x50	68	86
4x2 1/2	100x65	77	89
4x3	100x80	82	90
3/8x1/4	10x8	23	23
1/2x3/8	15x10	26	26
3/4x3/8	20x10	28	28
3/4x1/2	20x15	28.5	29.5
1x1/2	25x15	31	32
1x3/4	25x20	33	34
1 1/4x1/2	32x15	33	37
1 1/4x3/4	32/20	37	39
1 1/4x1	32x25	39	41
1 1/2x1/2	40x15	34	41



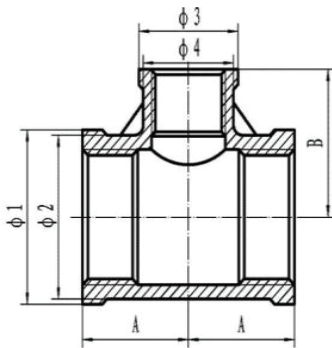
# PHỤ KIỆN REN (HIỆU FH)

## Street Elbow, 90



Size		Dimensions	
Inch	mm	A	B
1/8	6	17.5	23
1/4	8	20.5	30
3/8	10	24	36.5
1/2	15	26.5	39
3/4	20	31	46
1	25	37	53
1 1/4	32	45	61
1 1/2	40	47	67
2	50	55.5	78
2 1/2	65	67	90
3	80	76.5	102
4	100	95	124

## Tee, reducing



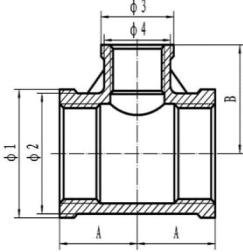
Size		Dimensions	
Inch	mm	A	B
3/8x1/4	10x8	22	22.5
1/2x3/8	15x10	26	26
1/2x1/4	15x8	24	24
3/4x3/8	20x10	28	28
3/4x1/2	20x15	28.5	29.5
3/4x1/4	20x8	26.5	27
1x3/8	25x10	30	32
1x1/2	25x15	31	32
1x3/4	25x20	33	34
1x1/4	25x8	28	31
1 1/4x3/8	32x10	31	35
1 1/4x1/2	32x15	32.5	37
1 1/4x3/4	32x20	35	39.5

Size		Dimensions	
Inch	mm	A	B
1 1/4x1/4	32x8	30	36.5
1 1/2x3/8	40x10	34	39
1 1/2x1/2	40x15	34.5	41
1 1/2x3/4	40x20	37	42
1 1/2x1	40x25	40	44
1 1/2x1 1/4	40x32	44	47
2x1/2	50x15	37	47
2x3/4	50x20	40	48
2x1	50x25	43	50
2x1 1/4	50x32	47	53
2x1 1/2	50x40	51	54
2 1/2x1	65x15	40	56
2 1/2x3/4	65x20	43	57



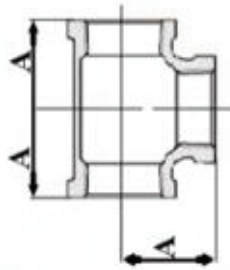
# PHỤ KIỆN REN (HIỆU FH)

## Tee, reducing



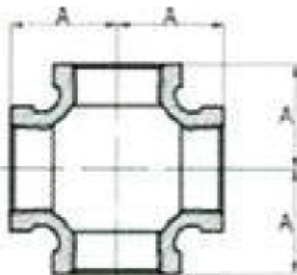
Size		Dimensions	
Inch	mm	A	B
2 <sup>1</sup> / <sub>2</sub> x1 <sup>1</sup> / <sub>4</sub>	65x32	51	61
2 <sup>1</sup> / <sub>2</sub> x1 <sup>1</sup> / <sub>2</sub>	65x40	54	61
2 <sup>1</sup> / <sub>2</sub> x2	65x50	59	63.5
3x3/4	80x20	45	65
3x1	80x25	49	67
3x1 <sup>1</sup> / <sub>4</sub>	80x32	54	69
3x1 <sup>1</sup> / <sub>2</sub>	80x40	57	71
3x2	80x50	61	71
3x2 <sup>1</sup> / <sub>2</sub>	80x65	71	74
4x1	100x25	56	82
4x1 <sup>1</sup> / <sub>4</sub>	100x32	60	85
4x1 <sup>1</sup> / <sub>2</sub>	100x40	62	85
4x2	100x50	68	86
4x3	100x80	81.5	89.5

## Tee



Size	Dimensions
Inch	A
1/8	17.5
1/4	20
3/8	23.5
1/2	26.5
3/4	31
1	36.5
1 1/4	43.5
1 1/2	47.5
2	55.5
2 1/2	67
3	75.5
4	94
5	114
6	128.5

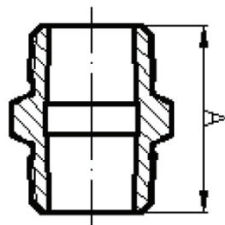
## Cross



Size	Dimensions
Inch	A
1/8	17.5
1/4	20
3/8	23.5
1/2	26.5
3/4	31
1	36.5
1 1/4	43.5
1 1/2	47.5
2	55.5
2 1/2	67
3	75.5
4	94

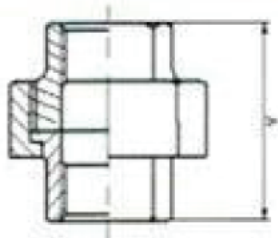
# PHỤ KIỆN REN (HIỆU FH)

## Hexagon Nipple, equal



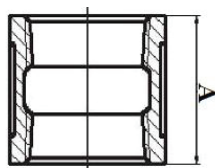
Size		Dimensions
Inch	mm	A
1/8	6	29
1/4	8	36
3/8	10	38
1/2	15	43
3/4	20	45
1	25	52
1 1/4	32	55
1 1/2	40	58
2	50	65
2 1/2	65	72
3	80	82
4	100	88
6	150	110

## Union



Size		Dimensions
Inch	mm	A
1/8	6	33.5
1/4	8	36.5
3/8	10	40
1/2	15	43.5
3/4	20	51.5
1	25	53
1 1/4	32	56
1 1/2	40	59.5
2	50	68.5
2 1/2	65	83
3	80	94
4	100	113
6	150	144

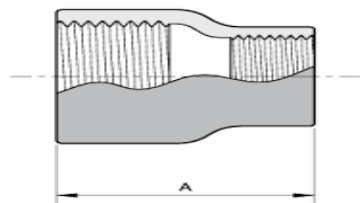
## Socket



Size		Dimensions
Inch	mm	A
1/8	6	24.5
1/4	8	26.5
3/8	10	29.5
1/2	15	33
3/4	20	37
1	25	43
1 1/4	32	49
1 1/2	40	53.5
2	50	59
2 1/2	65	69
3	80	74
4	100	83.5
6	150	104

# PHỤ KIỆN REN (HIỆU FH)

## Socket, reducing

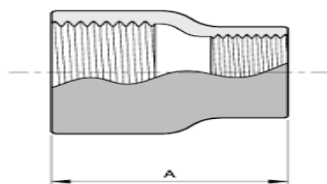


REDUCING SOCKET



Size	Dimensions	
Inch	mm	A
1/2x1/4	15x8	32
1/2x3/8	15x10	32
3/4x1/4	20x8	38
3/4x3/8	20x10	38
3/4x1/2	20x15	38
1x3/8	25x10	42
1x1/2	25x15	42
1x3/4	25x20	42
1 <sup>1/4</sup> x1/2	32x15	48
1 <sup>1/4</sup> x3/4	32x20	48
1 <sup>1/4</sup> x1	32x25	48
1 <sup>1/2</sup> x1/2	40x15	52
1 <sup>1/2</sup> x3/4	40x20	52
1 <sup>1/2</sup> x1	40x25	52

## Socket, reducing

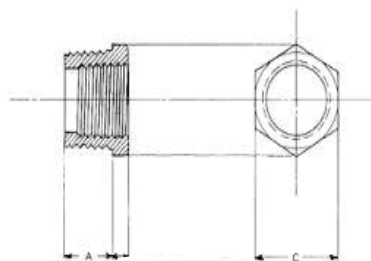


REDUCING SOCKET



Size	Dimensions	
Inch	mm	A
1 <sup>1/2</sup> x1 <sup>1/4</sup>	40x32	52
2x1/2	50x15	58
2x3/4	50x20	58
2x1	50x25	58
2x1 <sup>1/4</sup>	50x32	58
2x1 <sup>1/2</sup>	50x40	58
2 <sup>1/2</sup> x1 <sup>1/4</sup>	65x32	65
2 <sup>1/2</sup> x1 <sup>1/2</sup>	65x40	65
2 <sup>1/2</sup> x2	65x50	65
3x1 <sup>1/2</sup>	80x40	72
3x2	80x50	72
3x2 <sup>1/2</sup>	80x65	72
4x2	100x50	85
4x2 <sup>1/2</sup>	100x65	85
4x3	100x80	85

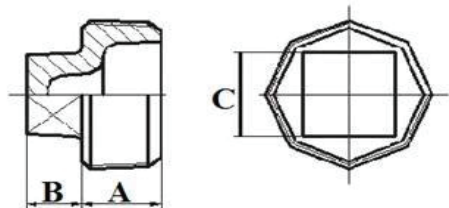
## Bushing



Size	Dimensions			
Inch	mm	A	B	c
1/4x1/8	8x6	11.2	3.6	16.3
3/8x1/8	10x6	12.2	4.3	17.3
3/8x1/4	10x8	12.2	4.1	17.3
1/2x1/8	15x6	14.2	4.8	22.1
1/2x1/4	15x8	14.2	4.8	22.1
1/2x3/8	15x10	14.2	4.8	22.1
3/4x1/8	20x6	16	5.6	29.2
3/4x1/4	20x8	16	5.6	29.2
3/4x3/8	20x10	16	5.6	29.2
3/4x1/2	20x15	16	5.6	29.2
1x1/8	25x6	21	7	35

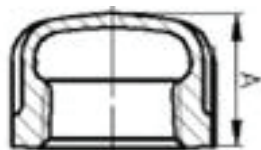
# PHỤ KIỆN REN (HIỆU FH)

## Plug



Size		Dimensions		
Inch	mm	A	B	C
1/8	6	9.5	6.5	7.4
1/4	8	12	7.5	8.2
3/8	10	12.8	8.2	10
1/2	15	15	10	11.5
3/4	20	17	11	12.8
1	25	19.5	13	16
1 <sup>1/4</sup>	32	20.6	14.5	19
1 <sup>1/2</sup>	40	21.6	16	23
2	50	22.6	17.5	26.6
2 <sup>1/2</sup>	65	28	18	32
3	80	28.9	21	35
4	100	38.5	26	44.5
6	150	41.5	30	66.5

## Cap



Size		Dimensions
Inch	mm	A
1/8	6	13
1/4	8	15
3/8	10	17
1/2	15	19
3/4	20	22
1	25	24
1 1/4	32	27
1 1/2	40	30
2	50	32
2 1/2	65	35
3	80	38
4	100	45